



METROLOGIC INSTRUMENTS, INC.
Optimus USB Driver Installation Guide

Copyright

© 2005 by Metrologic Instruments, Inc. All rights reserved. No part of this work may be reproduced, transmitted, or stored in any form or by any means without prior written consent, except by reviewer, who may quote brief passages in a review, or provided for in the Copyright Act of 1976.

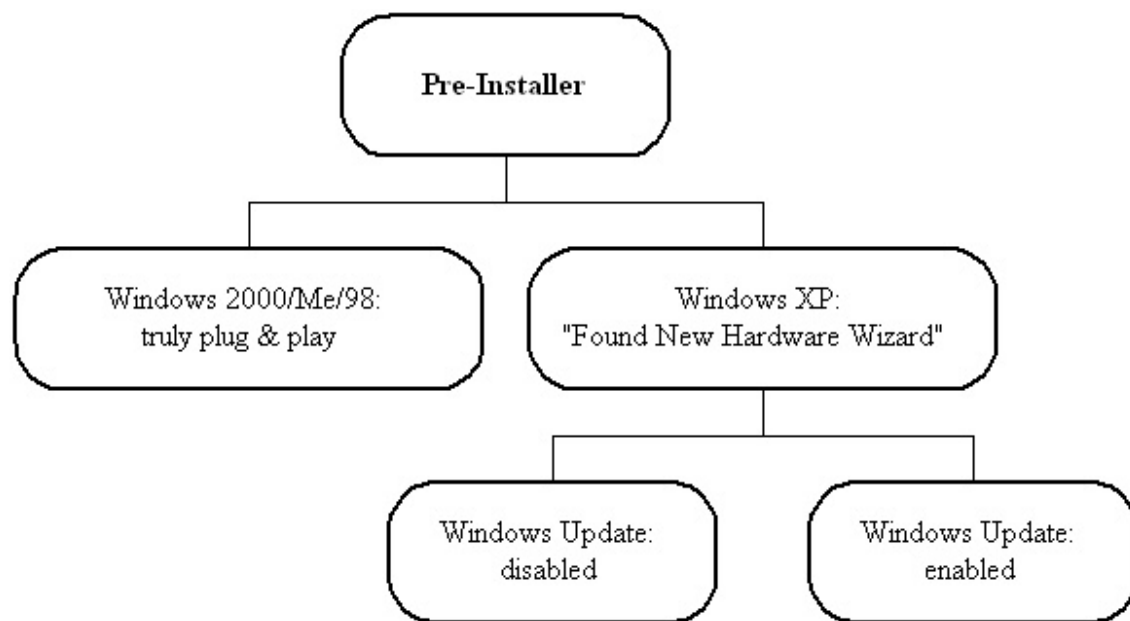
Products and brand names mentioned in this document are trademarks of their respective companies.

Introduction

Thank you for purchasing the RS232 to USB converter for your Optimus unit. The product fully complies with USB 2.0 specification and supports Windows 98se/Me/2000/XP. It ships with a CD containing its driver and this installation guide.

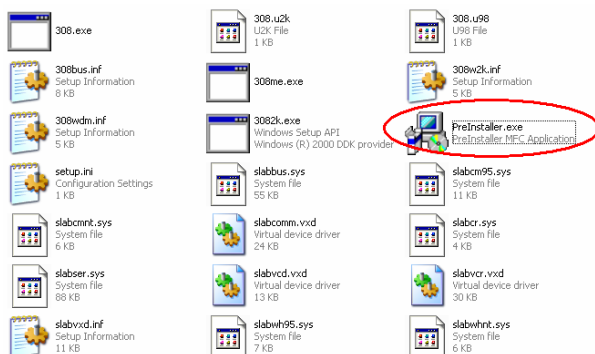
Flow Chart of Installation

According to your Windows system, follow relevant instructions in the manual to complete the installation.

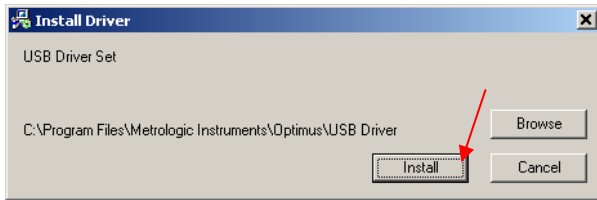


Pre-Installer

The "Pre-Installer" program is available in the driver package to help add the 308 USB Virtual COM Interface to your Windows system.



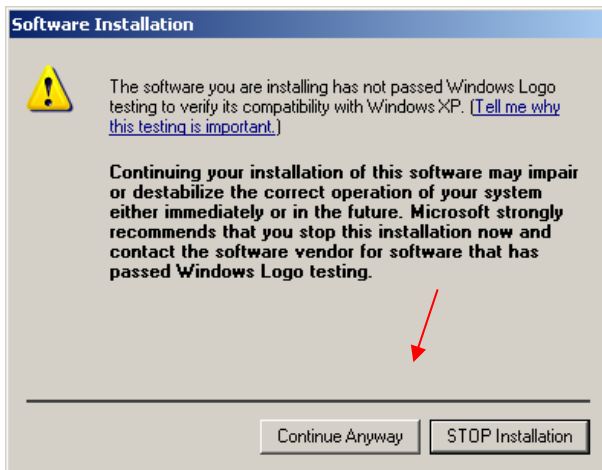
Execute program:
Pre-Installer.exe



Click "Install" to install the "308 Driver Set" to the specified destination folder.



For a different destination, click "Browse" to specify. This will appear for Windows XP only.

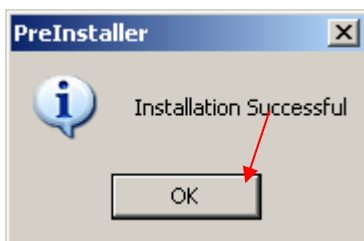


Click "Continue Anyway" as confirmation to continue the installation.

Click "Continue Anyway" again.



This will appear for Windows XP only.



The installation has been done successfully.
Click "OK" to exit.

After the driver being installed successfully to your system, connect the USB connector to PC.

Depending on the version of your Windows system, the system will auto detect this new hardware and decide whether "Found New Hardware Wizard" is needed or not. Proceed to next section for more information.

Windows Systems

Windows 2000/Me/98se

For the following Windows systems, the 308 USB Virtual COM Interface is a truly plug-and-play device:

- Windows 2000
- Windows Me
- Windows 98se

After successful installation of the driver (PreInstaller.exe):

1. Connect the USB connector to PC.
2. The system will add the “308 USB Virtual COM Interface” automatically.

There is no need going through the “Found New Hardware Wizard”, and no user intervention is required as well.

Windows XP

After successful installation of the driver (PreInstaller.exe):

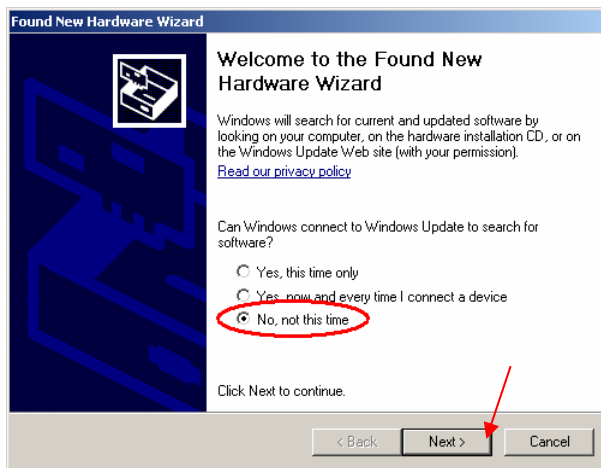
1. Connect the USB connector to PC.
2. The “Found New Hardware Wizard” will instruct how to add the “308 USB Virtual COM Interface” as follows:.
 - a. Install software for 308 USB controller
 - b. Install software for 308 virtual COM port



The “Found New Hardware Wizard” has to run twice to install first the 308 USB controller and then the 308 virtual COM.

Windows Update Disabled

Step 1: Install Software for 308 USB Controller



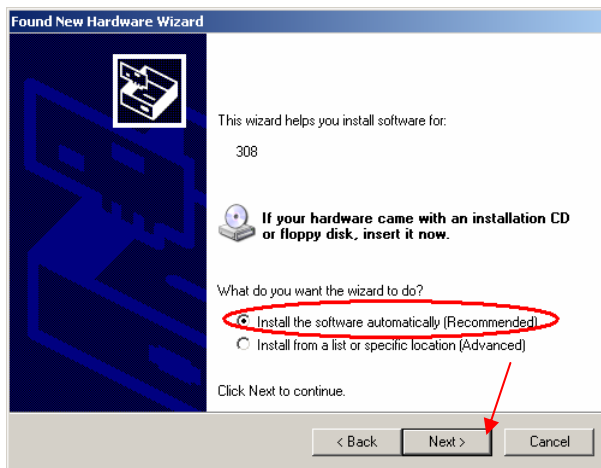
There is no need connecting to Windows Updates to search for software.

Select "No, not this time."

Then click "Next" to continue.

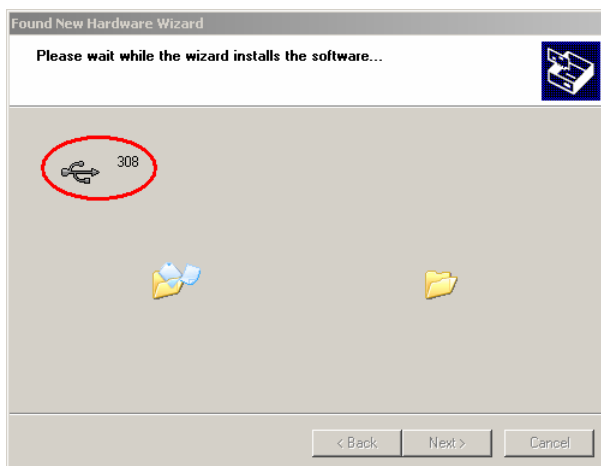


Once "Yes, now and every time I connect a device." is selected when the first time the wizard pops up, this screen will not appear ever after. See 3.2.2.

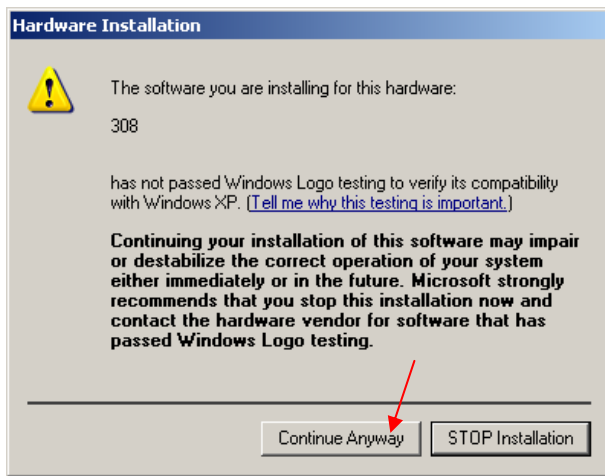


Select "Install the software automatically."

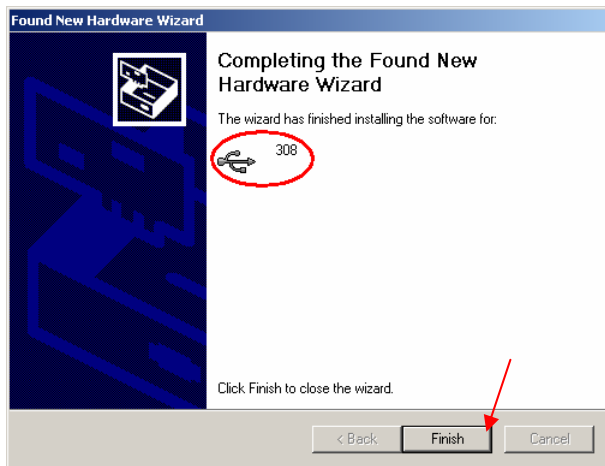
Then click "Next" to continue.



The installation of software is in process.



Click "Continue Anyway" as confirmation to continue the installation.



The installation has been done successfully.
Click "Finish" to exit.

Step 2: Install Software for 308 COM Port

After a couple of seconds, the "Found New Hardware Wizard" pops up again.



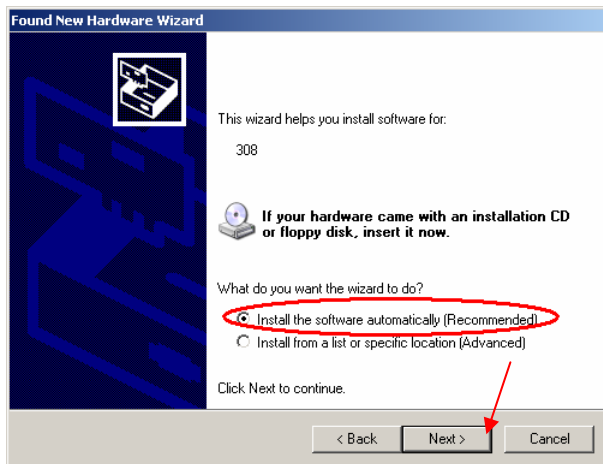
There is no need connecting to Windows Updates to search for software.

Select "No, not this time."

Then click "Next" to continue.

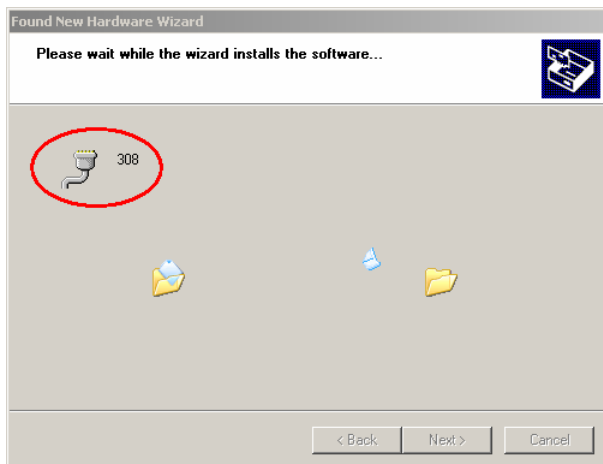


Once "Yes, now and every time I connect a device." is selected when the first time the wizard pops up, this screen will not appear ever after. See 3.2.2.

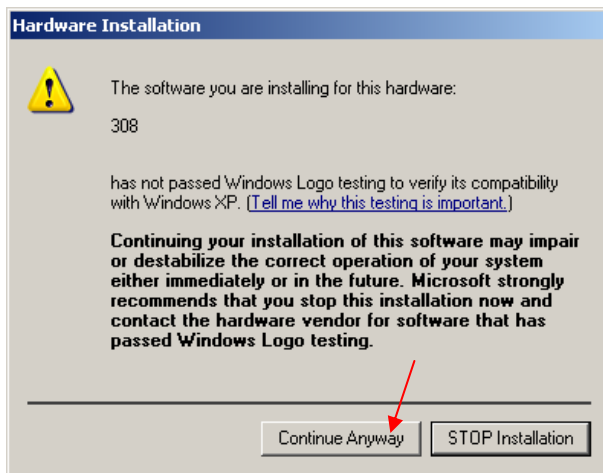


Select "Install the software automatically."

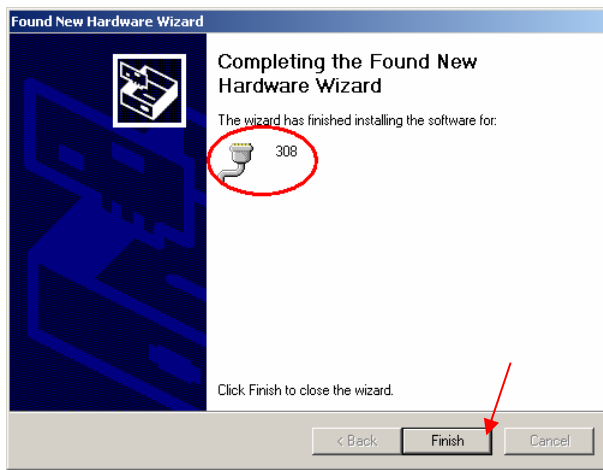
Then click "Next" to continue.



The installation of software is in process.



Click "Continue Anyway" as confirmation to continue the installation.



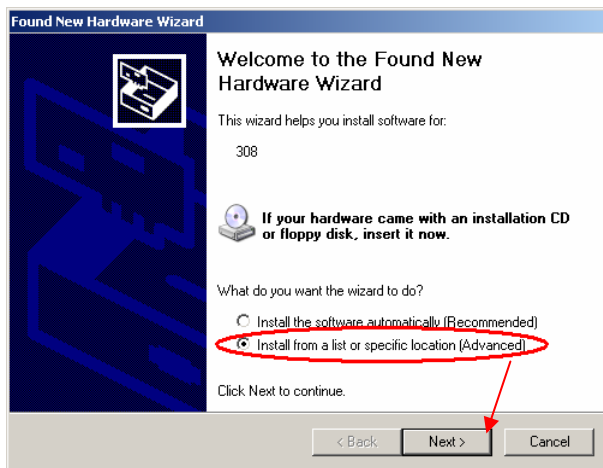
The installation has been done successfully.

Click "Finish" to exit.

Windows Update Enabled

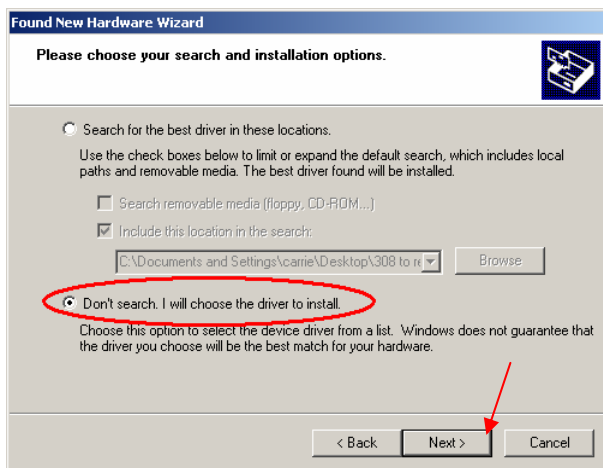
Step 1: Install Software for 308 USB Controller

The system will automatically connect to Windows Update and get ready to search for software.



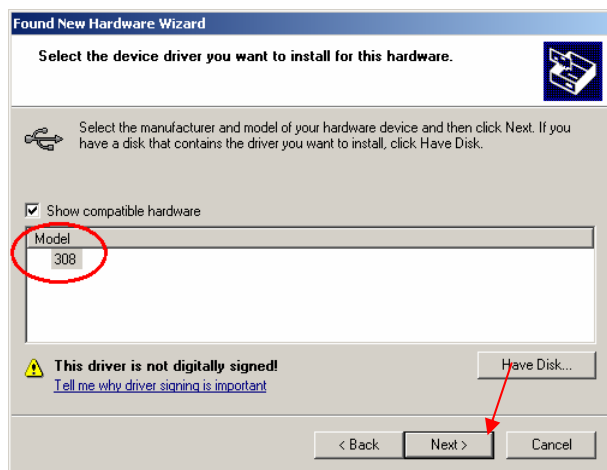
Select "Install from a list or specific location."

Then click "Next" to continue.

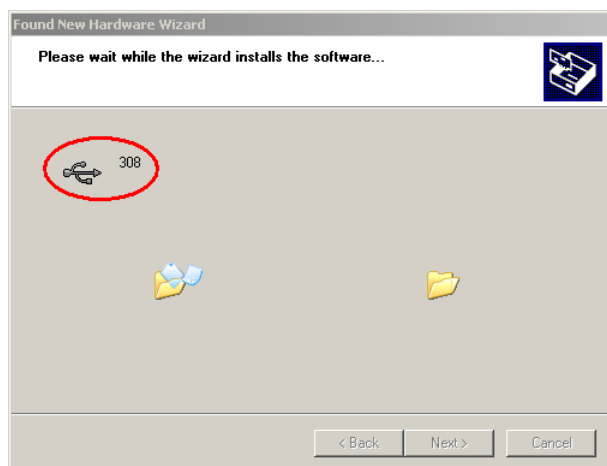


Select "Don't search. I will choose the driver to install."

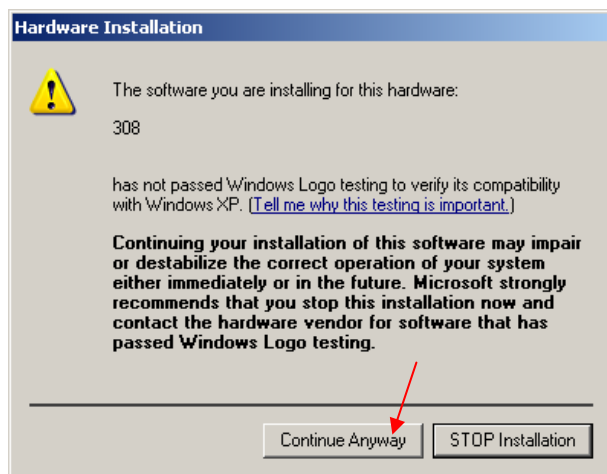
Then click "Next" to continue.



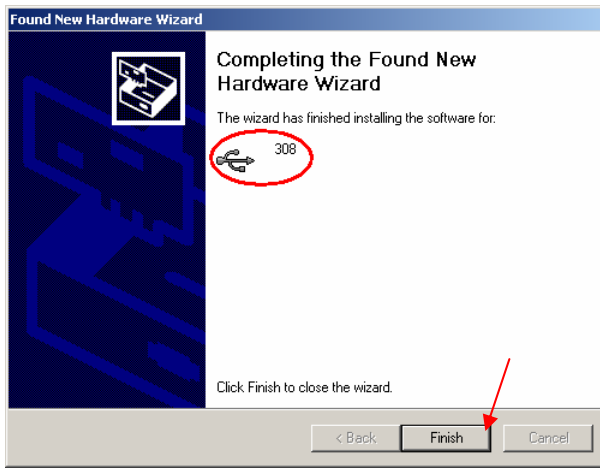
Select the device driver "308".
Then click "Next" to continue.



The installation of software is in process.



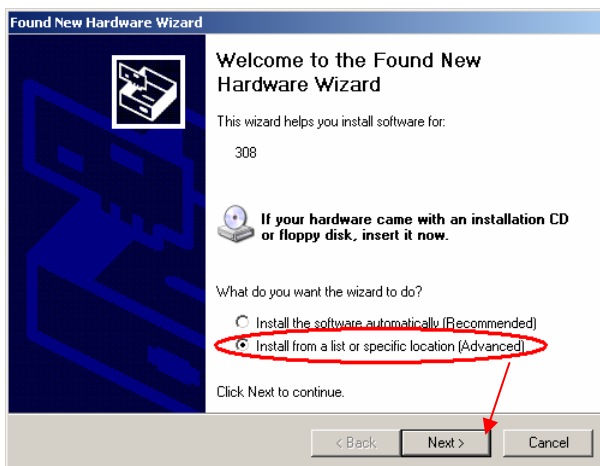
Click "Continue Anyway" as confirmation to continue the installation.



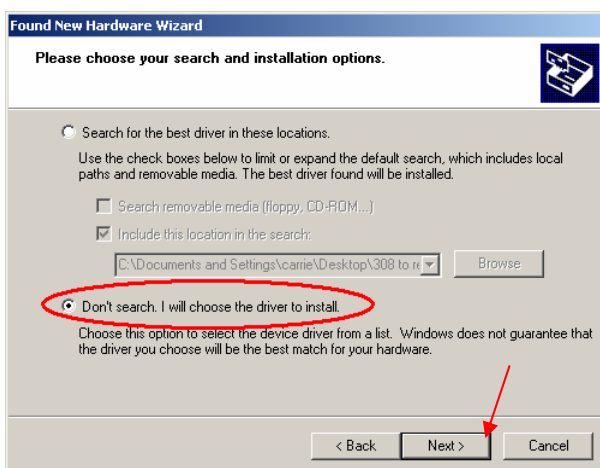
The installation has been done successfully.
Click "Finish" to exit.

Step 2: Install Software for 308 COM Port

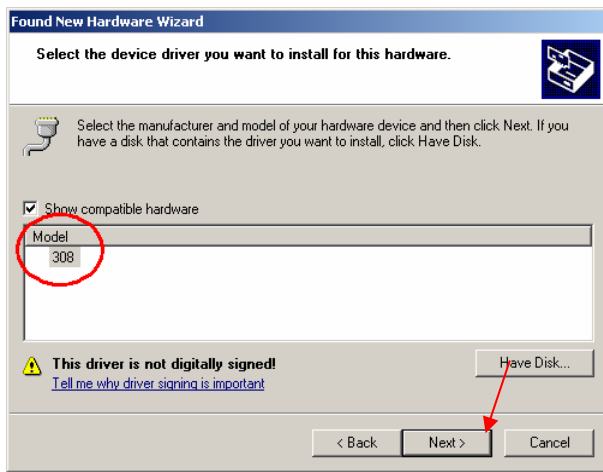
After a couple of seconds, the "Found New Hardware Wizard" pops up again. The system will automatically connect to Windows Update and get ready to search for software.



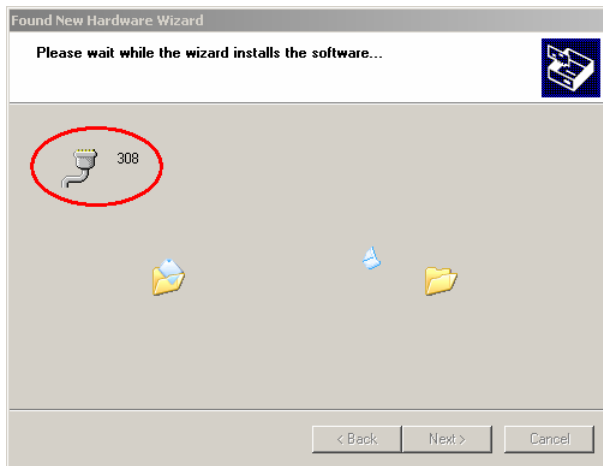
Select "Install from a list or specific location."
Then click "Next" to continue.



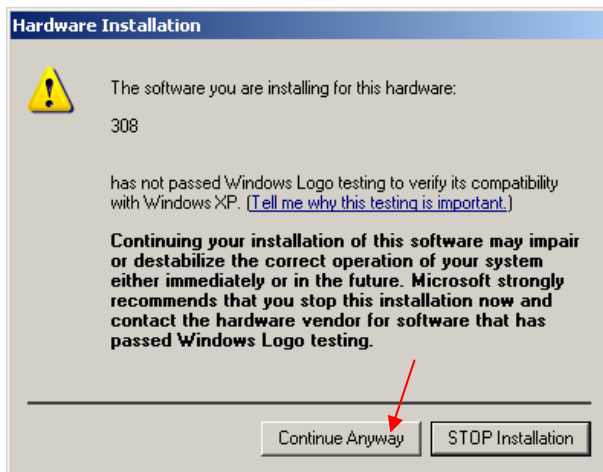
Select "Don't search. I will choose the driver to install."
Then click "Next" to continue.



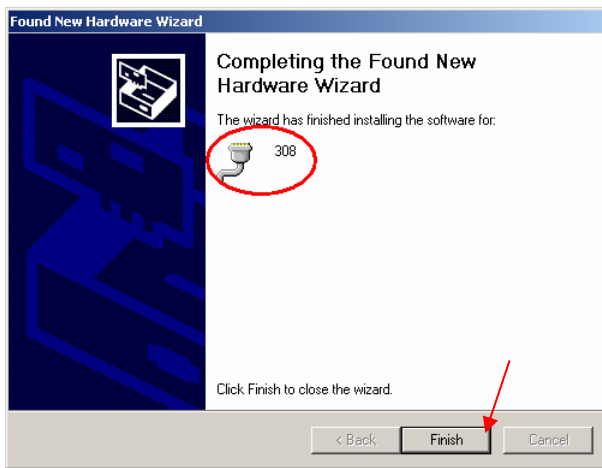
Select the device driver "308".
Then click "Next" to continue.



The installation of software is in process.



Click "Continue Anyway" as confirmation to continue the installation.

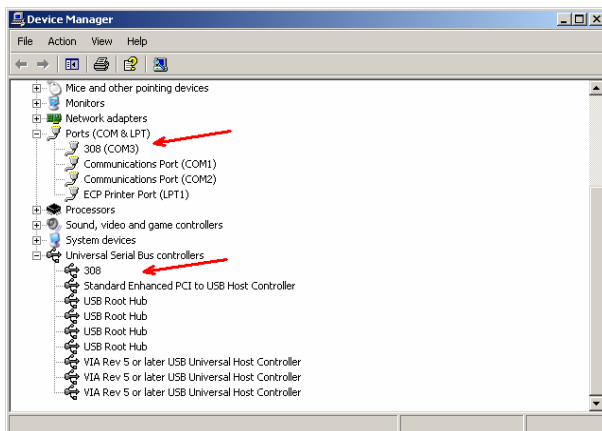


The installation has been done successfully.
Click "Finish" to exit.

Removal of Software

When the installation is completed, you will find the following information from the Device Manager.:

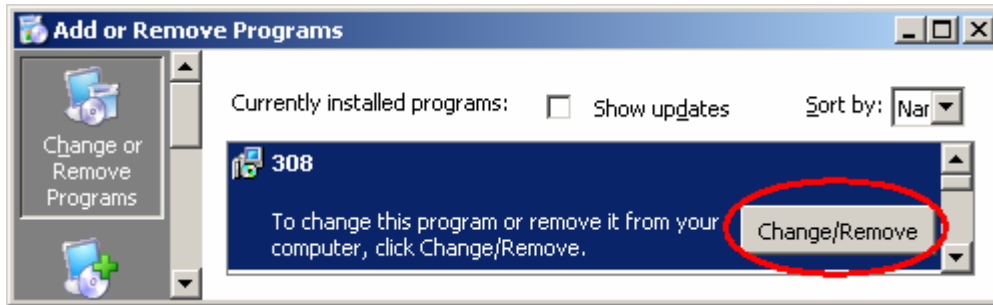
- Ports (COM & LPT): 308
- Universal Serial Bus Controllers: 308



Windows XP:
Go to the Control Panel and
select "System".

From "System Properties", click
the "Hardware" tab and then
click "Device Manager".

The software will not appear on the program list. To remove this program, go to Control Panel and then select “Add or Remove Programs”.



Windows XP:

Go to the Control Panel and select “Add or Remove Programs”.

From the “Change or Remove Programs” tab, click “308” and then the Change/Remove button.

Finally, click to confirm the removal of 308 driver.